

Level 2 Coaching Course : Team Tactics & Set Plays



Team Tactics & Set Plays



Workshop / discussion / practical

Unit Overview: Topics

- Review definitions & examples
- Line attack
- Line defence
- Mid-field attack & rucking
- Mid-field defence
- Transitions
- Tap plays (from penalty or tap-off)
- Other areas: drop-off, injuries, sin binning, etc

Duration: Approx 3 hours

Definitions & application

- Strategies
 - How formed?
 - When used?
 - Review & updating
- Tactics
 - How formed?
 - When used?
 - Review & updating



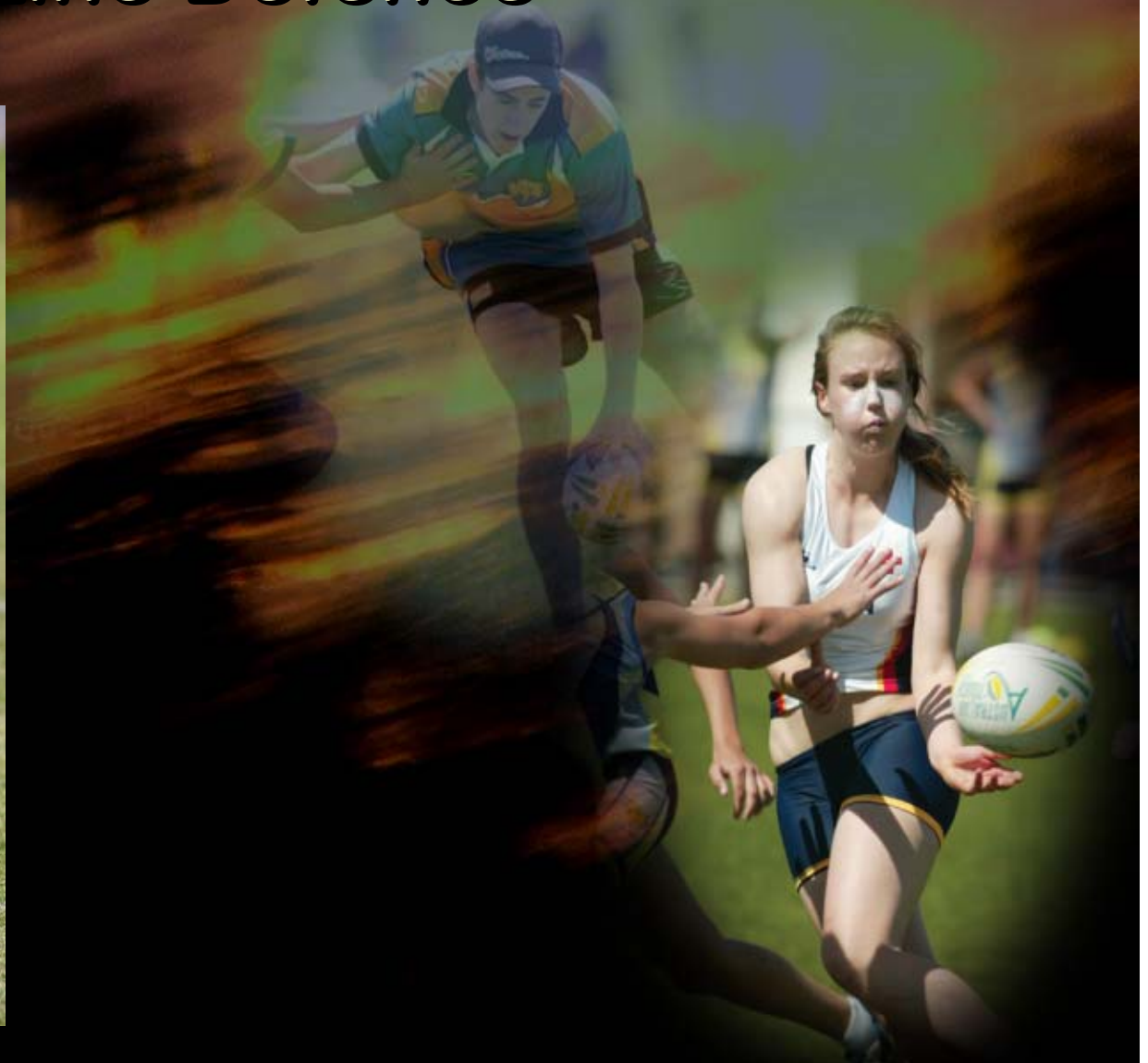
Line Attack



“To win a game, the first thing one must not do is to lose the game”



Line Defence



Mid-field Attack



Transitions

- Attack
- Defence



Tap Plays



Other areas

- Interchange procedure
- Drop-off
- Injury
- Sin bin or send off
- Team rotation
- Player ownership
- Other ?



Mid-field Defence



Questions ?

